



Digital Sound Projector™
YSP-5100

NEW PRODUCT BULLETIN

For more information or to place an order
please call Diamond Case Designs, Inc. at
800-616-5354.



Thin is in. Thin is innovation.

Innovation can take many forms. Sometimes, less is more, in terms of innovation: the YSP-5100, for example. It's much thinner than previous models, so it matches the new slim TVs and presents a more elegant appearance. Yet its room-filling surround sound is spectacular. Slim. Elegant. Innovative. The YSP-5100.



Digital Piano:
YAMAHA MODUS F-01

Powered by music

For more information or to place an order please call Diamond Case Designs, Inc. at 800-616-5354.

Yamaha's latest Digital Sound Projector™ provides many great new features like HD Audio decoding, 1080p-compatible HDMI (4 in/1 out), IntelliBeam, numerous listening modes, UniVolume™ and yAired™ technology for iPod/iPhone and subwoofer.

A perfect match for over 50" flat TVs and monitors.



The YSP-5100 Digital Sound Projector™ includes accessories for iPod/iPhone wireless transmission (YIT-W10) and subwoofer wireless reception (SWK-W10).



Accessory included for iPod/iPhone wireless transmission (YIT-W10)



Accessory included for subwoofer wireless reception (SWK-W10)



True HD Surround Sound

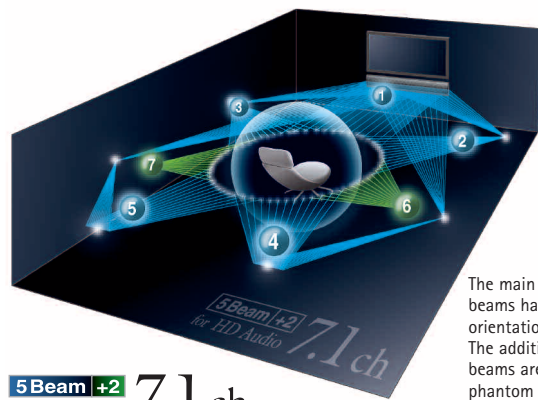
- HD Audio format decoding: Dolby TrueHD and DTS-HD Master Audio; Dolby Digital Plus and DTS-HD High Resolution Audio
- Versatile listening modes, including 7-channel output capability
- Sensational multi-channel sound from BDs, DVDs and other digital sources
- 11 CINEMA DSP programs: 3 Movie, 3 Music and 5 Entertainment

Elegant, Space-Saving Design

- Built-In DSP, Speakers and Digital Amplifiers
- No need for additional speakers and cables
- Can be wall-mounted or placed on a shelf or rack
- Design is more elegant, less obtrusive than multiple speaker boxes
- Thinner than previous models, matching the latest slim flat screen TVs

Advanced Features

- Analog video to HDMI digital video upconversion
- 1080p-compatible HDMI (4 in/1 out) with Deep Color, X.V Color, Auto Lip-Sync and CEC functionality
- IntelliBeam Automated System Calibration
- yAired™ Technology for wireless transmission of uncompressed data
- UniVolume keeps volume during TV programs and commercials at the same level
- iPod/iPhone connectability via included wireless transmitter
- Built-in FM tuner and SIRIUS Satellite Radio Ready
- Adaptive DRC, Music Enhancer and Bass Extension
- Custom Installation functions (RS-232C/IR in/IR pass through out/Extended IR)
- Preset Remote Control



The main 5-channel beams have independent orientations. The additional 2-channel beams are created with phantom technology.

5Beam +2 7.1ch
for HD Audio

Main Specifications	
Speakers Section	1 1/2" x 40 beam drivers: 1" x 2 balanced-dome tweeters + 4 1/2" x 2 woofers
Digital Amplifiers	120 W total power: 2W x 40 beam drivers + 20W x 2 (woofer + tweeters)
Standby Power Consumption	0.5 W
Dimensions (W x H x D)	47 1/4" x 8 3/8" x 3 1/2"
Weight	24.2 lbs.

True Surround Sound

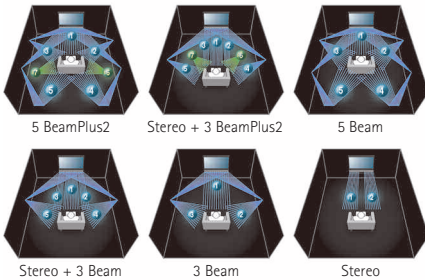
HD Audio Decoding

The YSP-5100 ensures that you hear the best possible sound from Blu-ray Disc players, as well as from all other digital sources. It is capable of decoding the two lossless HD Audio formats (Dolby TrueHD and DTS-HD Master Audio) as well as the two lossy formats (Dolby Digital Plus and DTS HD High Resolution).



Versatile listening modes

The YSP-5100 achieves true surround sound by directing sound beams off the walls to reach the listener from various angles. The main mode is 5 BeamPlus2 for 7-channel sources. In addition, there is a wide variety of other listening modes. You can select 3 Beam + Stereo + 2, 5 Beam, 3 Beam + Stereo, 3 Beam or Stereo, depending on the type of source and your room acoustics.



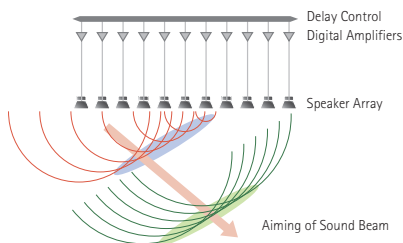
Eleven CINEMA DSP Programs

Yamaha's ultra-sophisticated CINEMA DSP technology creates thrillingly realistic soundscapes in any room. Eleven CINEMA DSP programs (three Movie, three Music and five Entertainment) are available.



Digital Sound Projector™ Technology

The YSP-5100 applies this sophisticated technology to precisely control the orientation of the sound by focusing it through multiple beams. The center channel sound is heard directly, while sounds from other channels are heard after reflecting off walls. The result is true multi-channel surround sound that sounds just



like a multi-speaker system – but without the need for extra speakers!

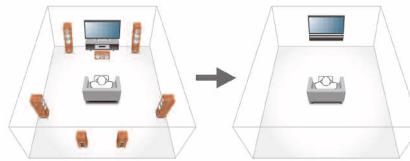
Elegant, Space-Saving Design

Built-In DSP, Speakers and Digital Amplifiers

This slim unit has everything necessary for projecting true surround sound built-in: DSP for Digital Signal Processor, 40 beam drivers, two woofers, two tweeters and digital amplifiers. The two built-in tweeters ensure high stereo sound quality. No other receiver, amplifier or speakers are necessary, making the system extremely compact and economical. This also makes it handy for use in a different room (zone) in a custom multi-zone system. What's more, the shape is even thinner (3 1/2" depth) than previous models.



YSP-5100 includes 40 beam drivers, two woofers, two tweeters and digital amplifiers



Conventional 7.1-channel system with seven speakers.

Yamaha YSP-5100

Advanced Features

1080p-Compatible HDMI (4 In/1 Out)

The YSP-5100 provides HDMI connections (4 in/1 out) with support for 1080p resolution. You can connect multiple HDMI sources and enjoy the highest possible video quality when using a 1080p monitor. It is also capable of repeating 1080p/24fps signals from HDMI input to output, maintaining the superior image quality from



Blu-ray Disc players and HDTV set top boxes. HDMI also provides the benefits of Deep Color, x.v.Color and Auto Lip-Sync.

Analog Video to HDMI Digital



YSP-5100 rear panel offers HDMI (4 in/1 out) interface, 2 optical, 1 coaxial digital and 2 analog audio inputs, 1 component video input, 1 composite video input and 1 output, IR in and IR pass through out, RS-232C interface for Custom Installation. Subwoofer output, System connector with SIRIUS satellite radio terminal, FM antenna terminal and Terminal for detachable AC cable.

Video Upconversion

The YSP-5100 provides upconversion of video composite and component signals to HDMI. The signal can then be output via a single HDMI cable to a monitor for enjoying high-definition video quality.

IntelliBeam Automated System Calibration

This Yamaha exclusive feature ensures optimum multi-channel sound reproduction with accurate image location. By monitoring and analyzing the sound with the microphone included with the YSP-5100, IntelliBeam automatically sets the best beam angles, while optimizing the level and frequency response of each beam. It also offers Direct Start function via remote unit. This makes initial setup both extremely simple and acoustically perfect.



UniVolume

This welcome feature, made possible by Yamaha-developed technology, maintains a consistent volume level between different channels, programs, commercials and input sources. It can be switched on and off.



HDMI CEC Functionality

When the YSP-5100 is connected to a CEC-compatible TV, such as a Panasonic VIERA Link TV, the YSP-5100 will turn on and off together with the TV, also allowing you to use the TV remote unit to control the YSP-5100 volume. With CEC engaged, signals will pass through the YSP-5100 even if it is off. CEC also provides advanced functionality with other components.

Music Enhancer

When music is encoded into a digitally compressed format like MP3, the frequency response suffers. This function restores what was lost, so your music always sounds the way it should.



Custom Installation functions

- RS-232C
- IR in and IR pass through out
- Extended IR



For more information or to place an order please call Diamond Case Designs, Inc. at 800-616-5354.

For more information or to place an order please call Diamond Case Designs, Inc. at 800-616-5354.

Accessories for Added Convenience

yAired™ Technology for Wireless Connections

Thanks to Yamaha's yAired™ technology, you can use your YSP-5100 with an iPod and subwoofer without having to connect any cables. The yAired™ link transmits uncompressed data (linear PCM) so there is no loss of signal data, unlike systems that use Bluetooth technology to send compressed data. This ensures maximum sound quality.

The PDX-50TX provides wireless connection capability to your iPod. This allows you to use the iPod as a remote control while listening to your iPod music, and provides synchronized power on/off. In addition, the iPod charges when it is in the included charging cradle. The SWK-W10 allows the wireless connection of any subwoofer, highly recommended for boosting bass sound. Both of these kits can be used together; when doing so, turning on the iPod automatically turns on the YSP-5100 and the subwoofer.



iPod not included

Supplied Accessory for iPod/iPhone wireless transmission (YIT-W10) (YIT-W10 includes PDX-50TX, PDX-50BC and AC adapter for PDX-50BC)

- YIT-W10 also sold separately

PDX-50TX Specifications:

- Dimensions (W x H x D): 1 3/4" x 7/8" x 3 1/4"
- Weight: 1.02 oz

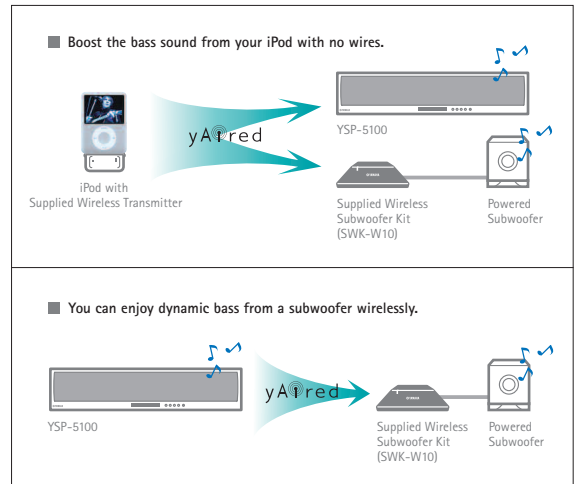
PDX-50BC Specifications:

- Dimensions (W x H x D): 2 1/4" x 3/4" x 2 7/8"
- Weight: 1.04 oz



Supplied Accessory for subwoofer wireless reception (SWK-W10)

- Dimensions (W x H x D): 4 7/8" x 2 1/4" x 4 7/8"
- Weight: 1.8 lbs.
- Also sold separately



Optional Space-Saving Accessories

If your TV is not mounted on the wall, Yamaha offers two convenient, space-saving ways to integrate it with your YSP-5100.



TV not included

YTS-T500 Integrated TV/Soundbar Pedestal

- The YTS-T500 supports both units on top of a rack, table, etc.
- Dimensions (W x H x D): 25 5/8" x 34 1/8" x 15 5/8"
- Weight: 35.3 lbs.
- Supports up to 52" (VESA standard), 99.2lbs. TVs



YTS-F500 Integrated TV/Soundbar Floor Stand

- Dimensions (W x H x D): 26 3/4" x 46" x 22 1/4"
- Weight: 62 lbs.
- Supports up to 60" (VESA standard), 110 lbs. TVs

Optional Wall Mount Bracket



SPM-K30

Optional Wall Mount Bracket

- Dimensions (W x H x D): 24 3/4"~28 3/4" (W) x 4 3/8" (H) x 3/4"~7/8" (D)*
- Weight: 3.5 lbs.
- Dimensions can be adjusted to fit your YSP.

• CINEMA DSP, IntelliBeam, yAired™ and UniVolume are trademarks of Yamaha Corporation. • Digital Sound Projector and " " are trademarks of Cambridge Mechatronics Ltd. • SIRIUS, XM and all related marks and logos are trademarks of Sirius XM Radio Inc. and its subsidiaries. All rights reserved. Service not available in Alaska and Hawaii. • HDMI, the HDMI logo and High-Definition Multimedia Interface are trademarks or registered trademarks of HDMI Licensing LLC. • Dolby and the double-D symbol are registered trademarks of Dolby Laboratories. • DTS is a registered trademark and the DTS logos, Symbol, DTS-HD and DTS-HD Master Audio are trademarks of DTS, Inc. • "Made for iPod" means that an electronic accessory has been designed to connect specifically to iPod and has been certified by the developer to meet Apple performance standards. • "Works with iPhone" means that an electronic accessory has been designed to connect specifically to iPhone and has been certified by the developer to meet Apple performance standards. • Apple is not responsible for the operation of this device or its compliance with safety and regulatory standards. • iPod is a trademark of Apple Inc., registered in the U.S. and other countries. • iPhone is a trademark of Apple Inc. • "x.v.Color" is a trademark. • Product designs and specifications are subject to change without notice.